



WHAT CAREER SUITS ME BEST?

Innate talents and your Vocational Calling

Meet Narelle Duncan

Astrologer – Naturopath – Counsellor – Teacher – Author



Narelle Duncan

Narelle's Astro ~ Healing via Nature Pty Ltd

For the past 20 years, I've enjoyed living my passion.

I've combined my skills as an Astrologer, Naturopath, Counsellor, and Teacher to consult with clients all over the world - helping them get clear about their life purpose so they can reach their potential and live their best life!

Diploma of Applied Science



Advanced Diploma of Naturopathy



Diploma of Astrology



Bachelor of Psychology Honours



✉ narelle@narellesastro.com

💬 07 5576 3422

🌐 www.astrologyreading.com.au

📘 www.facebook.com/NarellesAstrology

🐦 www.twitter.com/NarellesAstro

SESSION OVERVIEW

Innate talents and your Vocational Calling



Career Choice
Theory



Money Makers
2nd House



Daily
Productivity
6th House



Vocational
Calling
10th House
North Node



Changes in
Direction
MC Transits

CAREER CHOICE THEORY

Holland's Six Personality Types



CAREER ASSESSMENT

RIASEC

Creating satisfying careers

Matching Personality and Environment

Realistic – Investigative – Conventional – Artistic – Enterprising – Social

THE RIASEC TEST

1 Read each statement. If you agree with the statement, fill in the circle. There are no wrong answers!

- 2 Add up the number of filled in circles in each column and then add the two columns together for a grand total.
- 3 Using your grand total scores from above, transfer the scores for each letter into the appropriate column below.

- | | | |
|--|-----------------|--------------|
| R
I
A
S
E
C | = Realistic | Total: _____ |
| | = Investigative | Total: _____ |
| | = Artistic | Total: _____ |
| | = Social | Total: _____ |
| | = Enterprising | Total: _____ |
| | = Conventional | Total: _____ |

- MY INTEREST CODE

- 5 Turn the page to see what this means!

R = Realistic

These people are often good at mechanical or athletic jobs. Good college majors for Realistic people are...

- Agriculture
- Health Assistant
- Computers
- Construction
- Mechanic/Machinist
- Engineering
- Food and Hospitality

Related Pathways

Natural Resources
Health Services
Industrial and Engineering Technology
Arts and Communication

I = Investigative

These people like to watch, learn, analyze and solve problems. Good college majors for Investigative people are...

- Marine Biology
- Engineering
- Chemistry
- Zoology
- Medicine/Surgery
- Consumer Economics
- Psychology

Related Pathways

Health Services
Business
Public and Human Services
Industrial and Engineering Technology

A = Artistic

These people like to work in unstructured situations where they can use their creativity. Good majors for Artistic people are...

- Communications
- Cosmetology
- Fine and Performing Arts
- Photography
- Radio and TV
- Interior Design
- Architecture

Related Pathways

Public and Human Services
Arts and Communication

S = Social

These people like to work with other people, rather than things. Good college majors for Social people are...

- Counseling
- Nursing
- Physical Therapy
- Travel
- Advertising
- Public Relations
- Education

Related Pathways

Health Services
Public and Human Services

E = Enterprising

These people like to work with others and enjoy persuading and performing. Good college majors for Enterprising people are:

- Fashion Merchandising
- Real Estate
- Marketing/Sales
- Law
- Political Science
- International Trade
- Banking/Finance

Related Pathways

Business
Public and Human Services
Arts and Communication

C = Conventional

These people are very detail oriented, organized and like to work with data. Good college majors for Conventional people are...

- Accounting
- Court Reporting
- Insurance
- Administration
- Medical Records
- Banking
- Data Processing

Related Pathways

Health Services
Business
Industrial and Engineering Technology

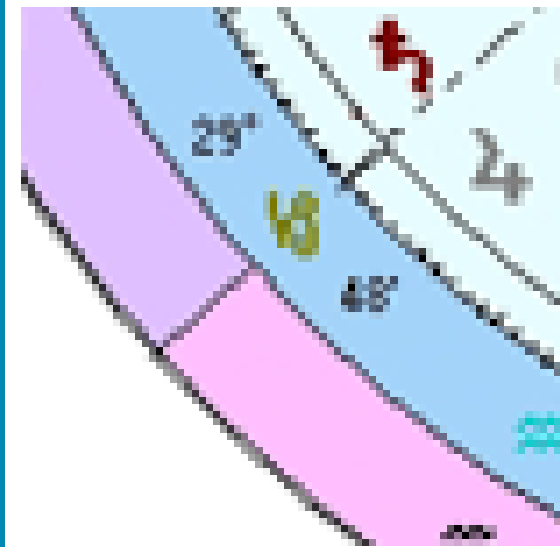


Money Makers

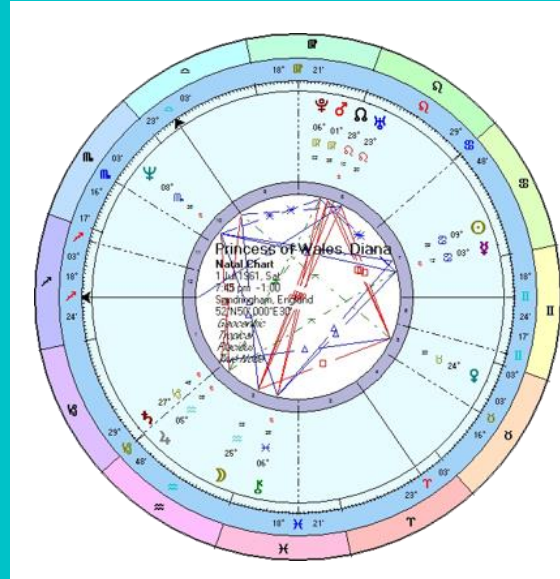
2nd House – Talents, Resources & Personal Assets

MONEY MAKERS

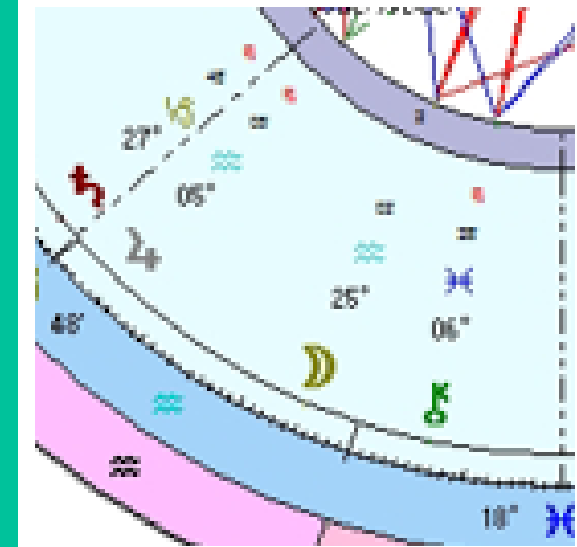
2nd House



2nd House Cusp Sign
Personal Assets
skills and talents



2nd House Ruler Sign & House
Skills Developed
through experiences



2nd House Planets
Personality
seeking expression

MONEY MAKERS

2nd House



Fire Sign

Inspiration

Open to the future
Seek new goals
Independence
Enthusiasm

Security vs Progress



Earth Sign

Practicality

Materialise vision
through effort
Use of senses
Validate worth

Vision vs Productivity



Air Sign

Movement

Flexibility & Relatedness
Social skills
Sharing environment
Open-minded

Consistency vs Curiosity



Water Sign

Sensitivity

Establish security
Develop nurturing skills
Respect feelings
Learn from the past

Curiosity vs Sensitivity

MONEY MAKERS

2nd House



Aries on the 2nd House Cusp

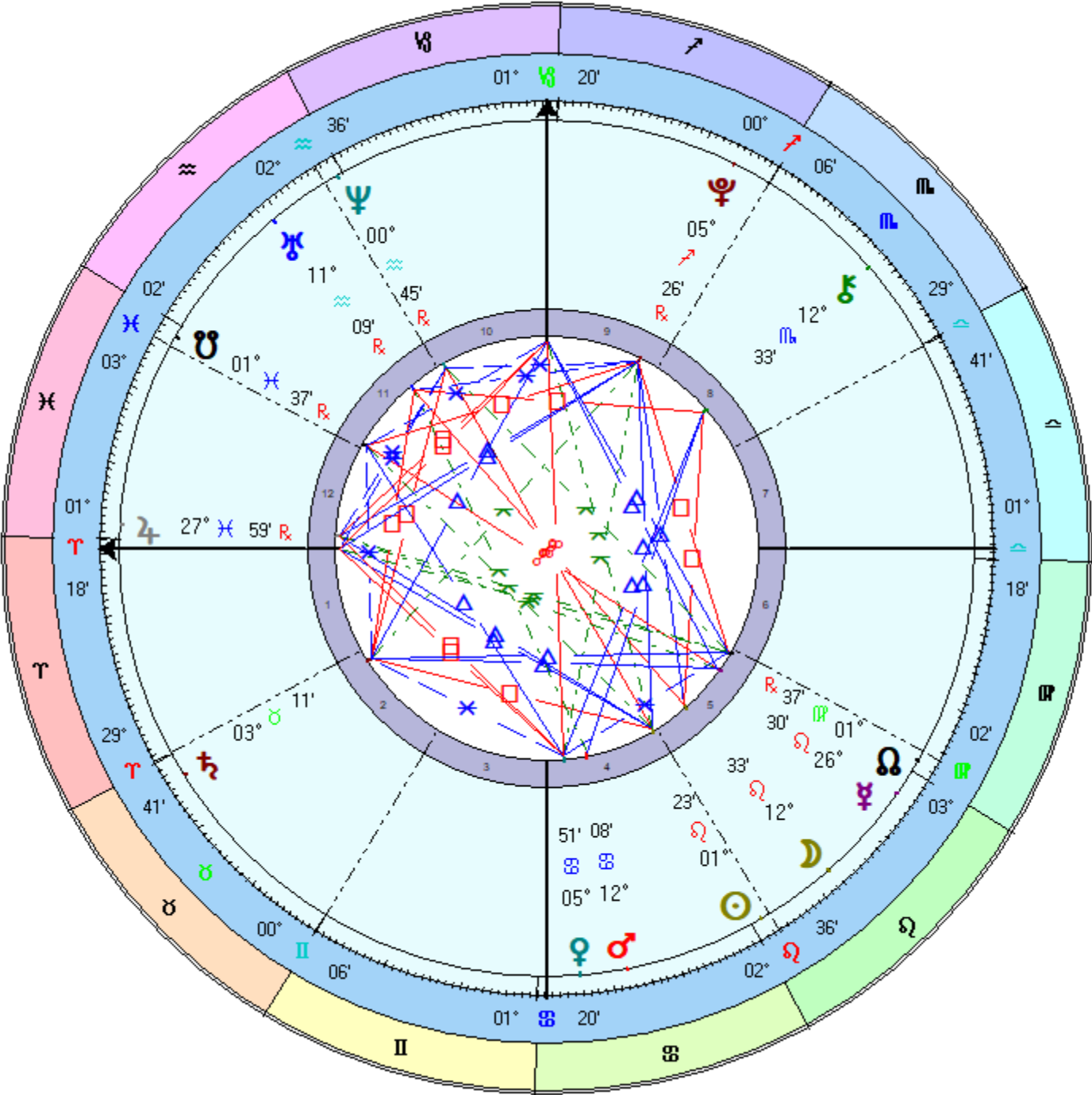
Self Starter



Bindi Irwin

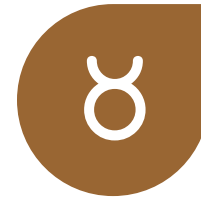
- ◀ Survive on your own – develop leadership skills
Courage and initiative to act independently
- ◀ Trust your instincts and act on them
Pioneer new territory
- ◀ ♂ Mars
Where (house) and how (sign) to stimulate self-motivation,
acquire assets and build survival skills

Bindi Irwin
Female Chart
24 Jul 1998, Fri
9:46 pm AEST -10:00
Nambour, AUSTL
26°S38' 152°E58'
Geocentric
Tropical
Placidus
True Node
Rating: A



MONEY MAKERS

2nd House



Taurus on the 2nd House Cusp

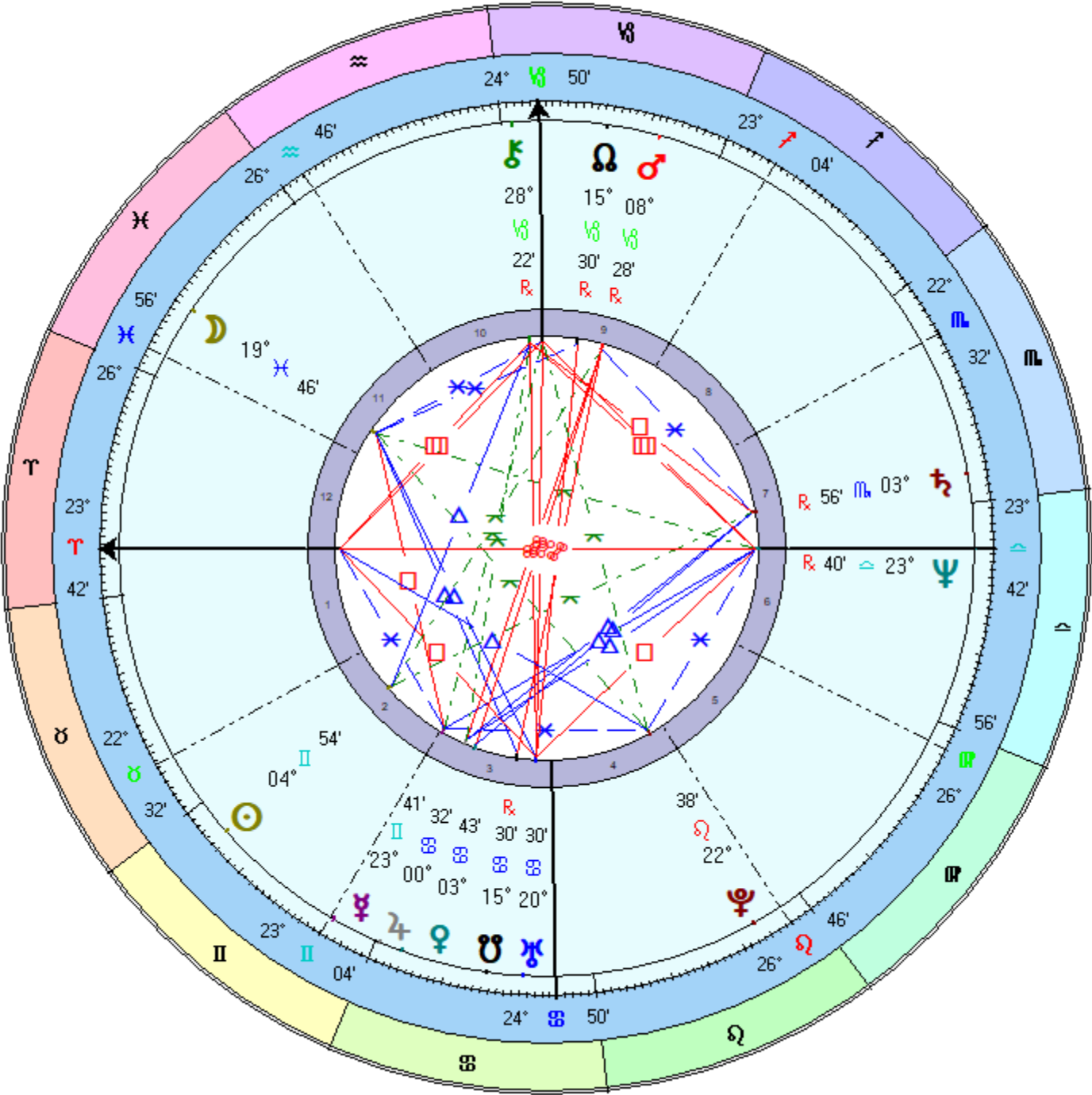
Determined Builder



Pauline Hanson

- ▶ Perseverance and productiveness
Appreciation of the material world
- ▶ Cultivate determination
Initiate projects and fulfill them to completion
- ▶ ♀ Venus
Where (house) and how (sign) to develop personal and social values, what stimulates accumulation and attracting what you need

Pauline Hanson
Female Chart
27 May 1954, Thu
3:20 am -10:00
Brisbane, Australia
27°S28' 153°E02'
Geocentric
Tropical
Placidus
True Node
Rating: A



MONEY MAKERS

2nd House



Alexander Downer



Gemini on the 2nd House Cusp

Intellectual Acuity

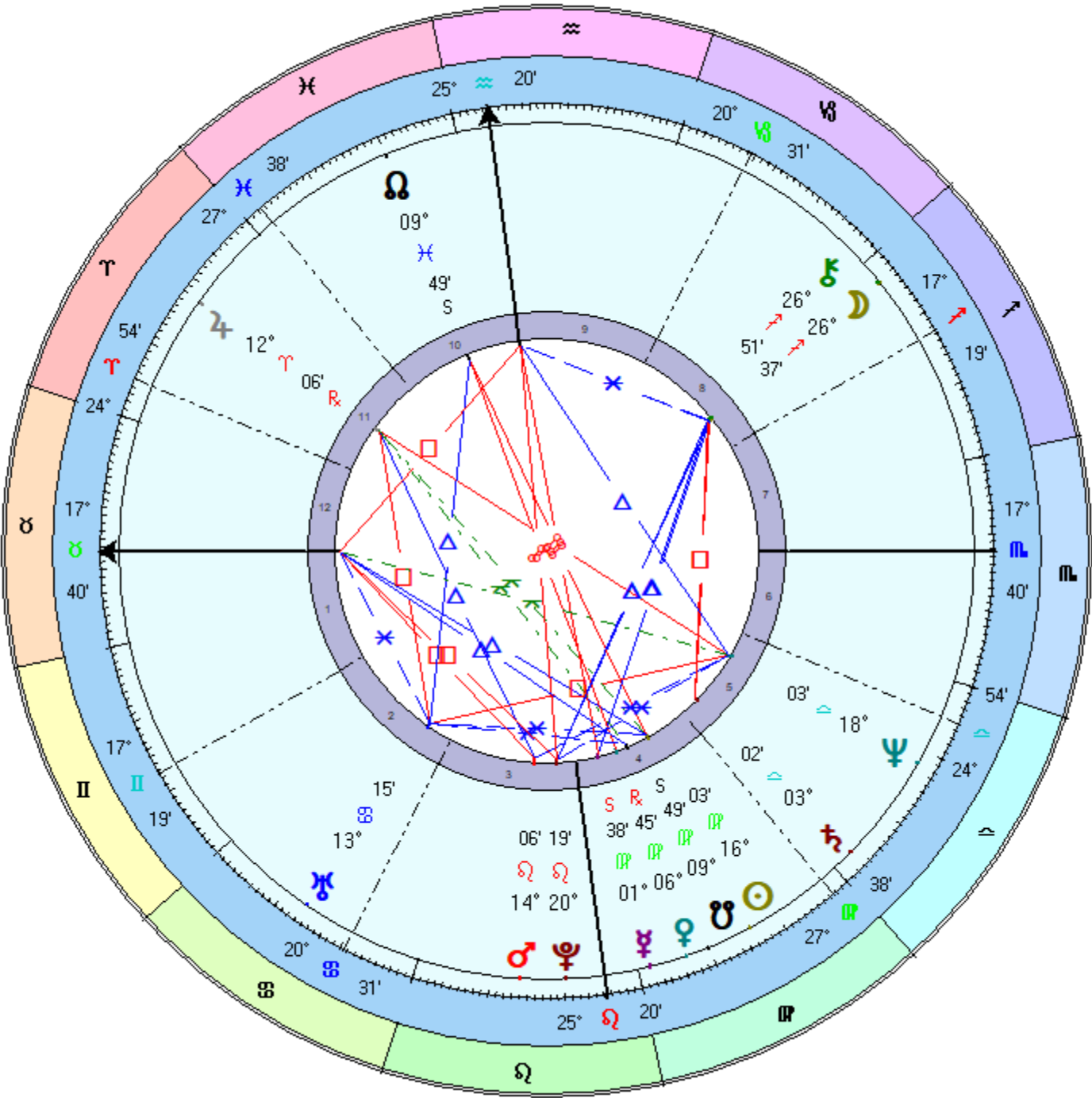
-
- ▶ Develop skills of adaptability
Utilise versatility and curiosity
 - ▶ Make intellectual connections
Build communication skills
 - ▶ ♿ Mercury
Where (house) and how (sign) to acquire information to build intellect and use it to build assets

Alexander Downer

Male Chart

9 Sep 1951, Sun
10:55 pm -9:30
Adelaide, Australia
34°S55' 138°E35'

Geocentric
Tropical
Placidus
True Node
Rating: A



MONEY MAKERS

2nd House



David Helfgott



Cancer on the 2nd House Cusp

Nurturer

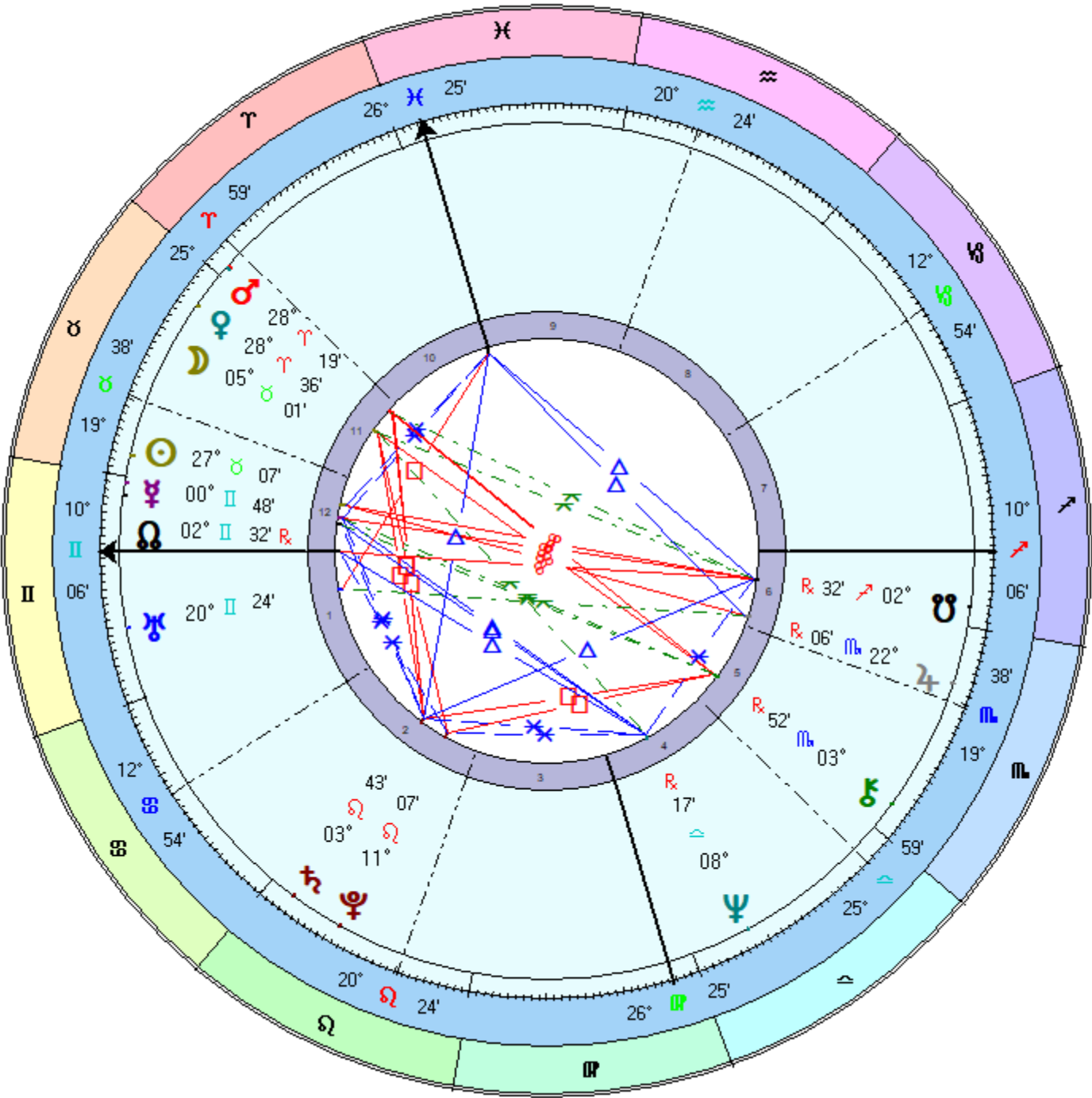
-
- ▶ Develop nurturing skills
Be sensitive to your environment
 - ▶ Feed, nurture and protect projects to maturity
Build strong emotional foundations
 - ▶ ☾ Moon
Where (house) and how (sign) to trigger and express emotions in building security and adaptability

David Helfgott

Male Chart

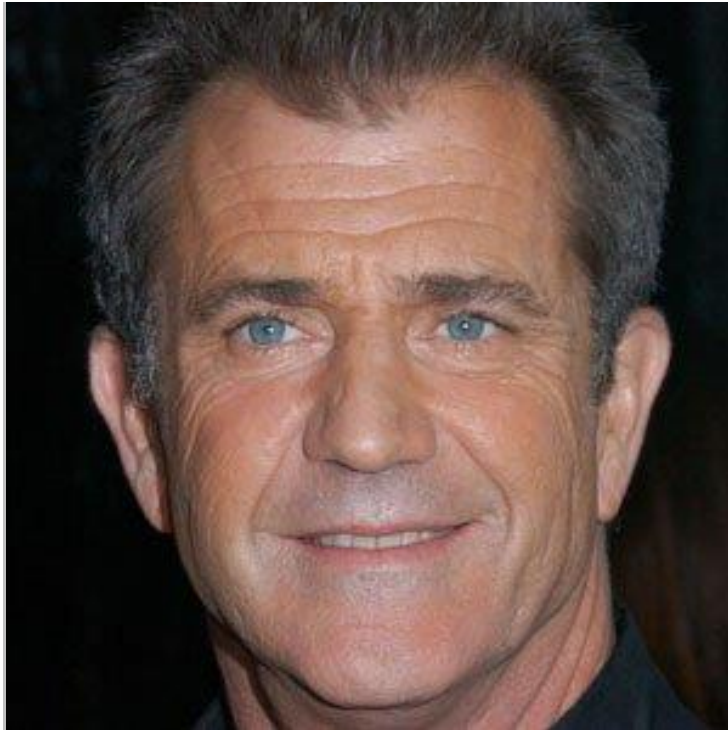
19 May 1947, Mon
8:24 am -10:00
Melbourne, Australia
37°S49' 144°E58'

Geocentric
Tropical
Placidus
True Node
Rating: C



MONEY MAKERS

2nd House



Mel Gibson

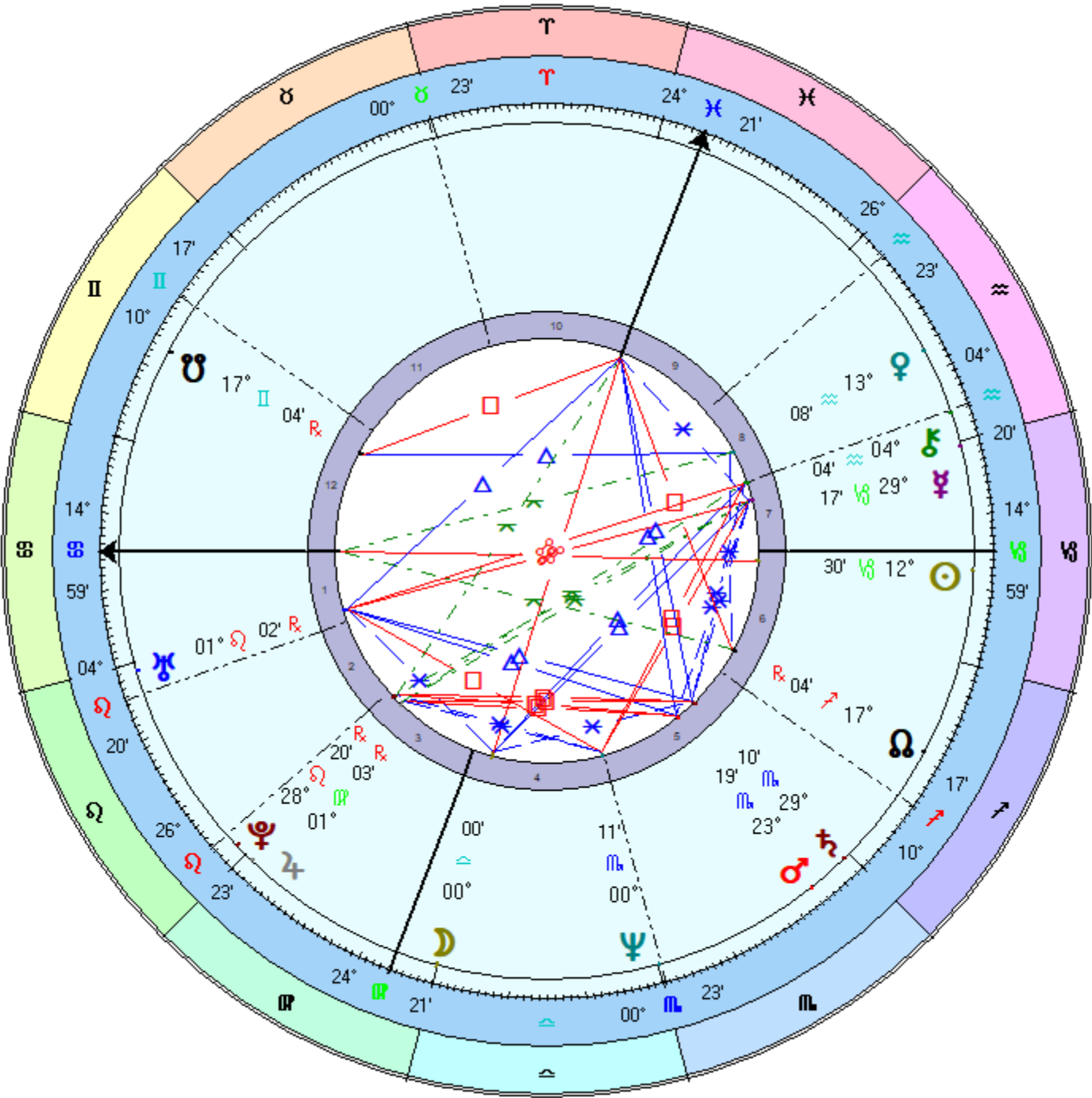


Leo on the 2nd House Cusp

Creator

-
- ◀ Develop pride and self-confidence
Stamp your identity on your creations
 - ◀ Confront directly and self-express
Be noticed and utilise self-empowerment to create
 - ◀ ☉ Sun
Where (house) and how (sign) opportunities arise to be powerful, purposeful and take pride in self-expression

Mel Gibson
Male Chart
3 Jan 1956, Tue
4:45 pm +5:00
Peekskill, NY
41°N17'24" 073°W55'15"
Geocentric
Tropical
Placidus
True Node
Rating: B



MONEY MAKERS

2nd House



Roy Kylie

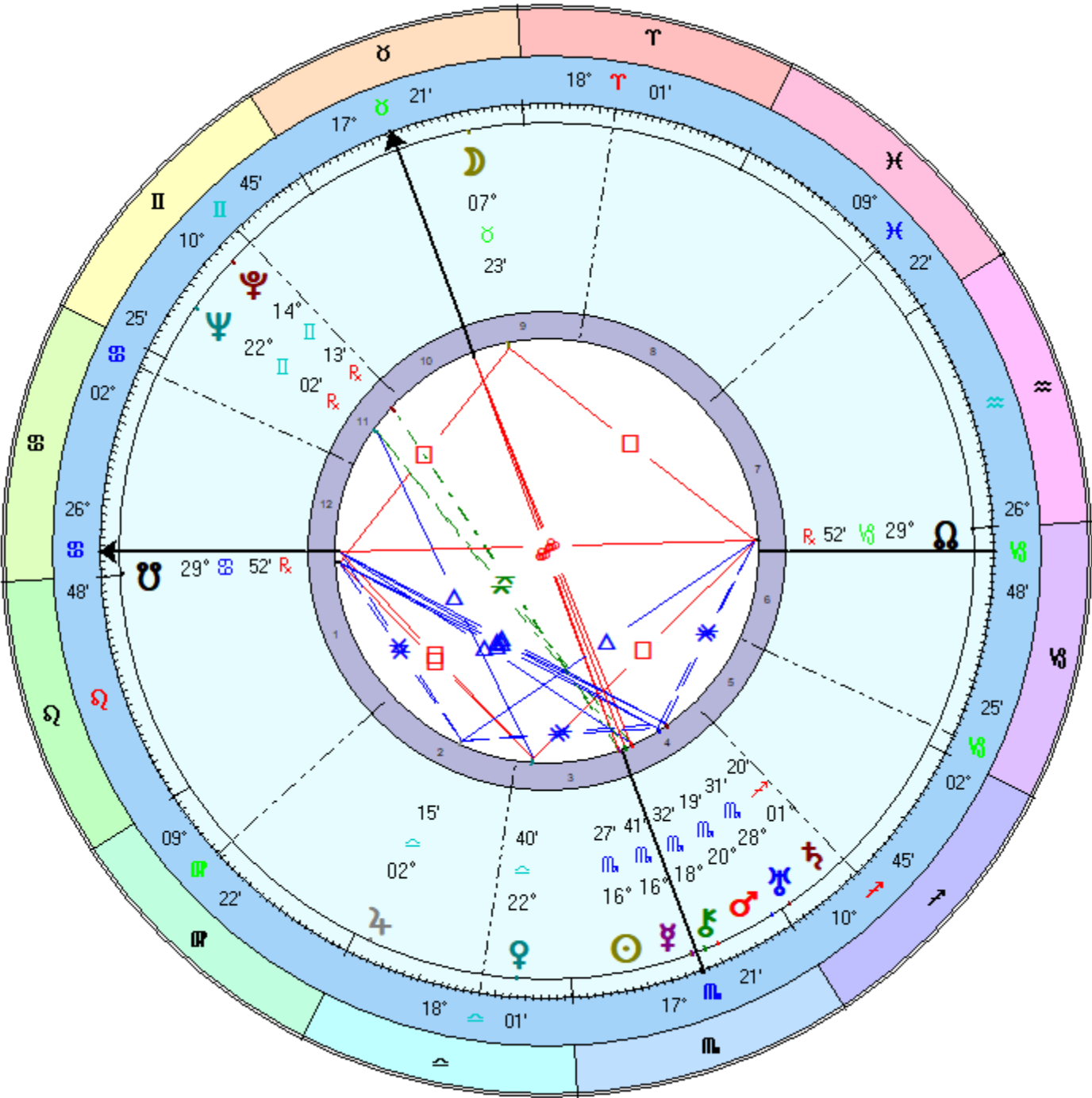


Virgo on the 2nd House Cusp

Analytical Diagnoser

-
- ◀ Develop analytical and discriminating skills
Pay attention to details and be practical
 - ◀ Be strategic in improving systems
Achieve utilitarian goals
 - ◀ ♄ Mercury
Where (house) and how (sign) information is available to build intellectual strength and how to accumulate information for success

Roy Kyle
Male Chart
9 Nov 1897 NS, Tue
0:02 am AEST -10:00
Corowa, AUSTL
36°S02' 146°E23'
Geocentric
Tropical
Placidus
True Node
Rating: B



MONEY MAKERS

2nd House



Bob Ansett

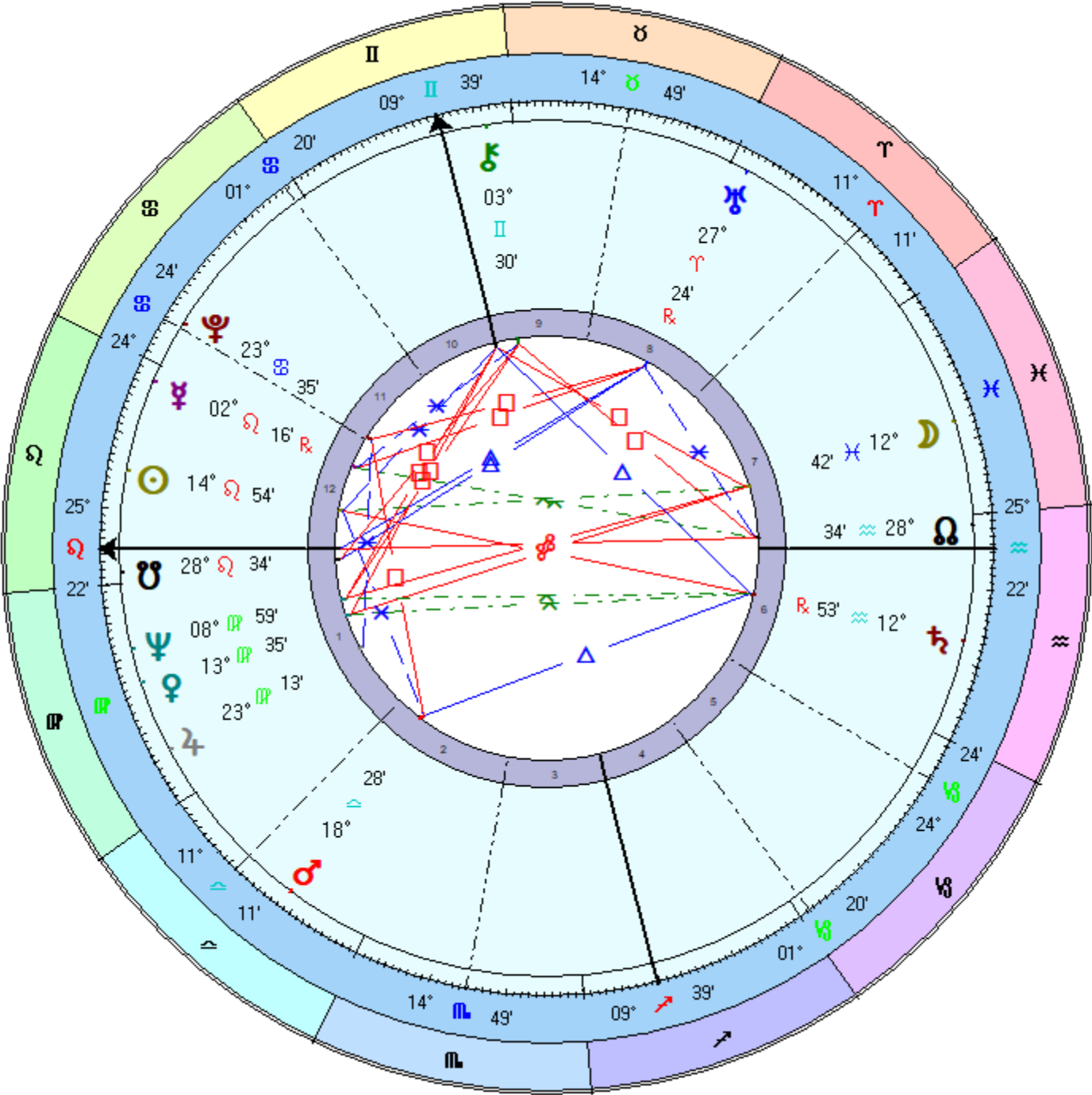


Libra on the 2nd House Cusp

Harmonising Relator

-
- ▶ Develop harmony, diplomacy and balance
Cultivate an appreciation of others
 - ▶ See more than one point of view
Create beauty and share it
 - ▶ ♀ Venus
Where (house) and how (sign) you attract people to you to practice diplomacy, tact, sharing and relating

Bob Ansett
Male Chart
8 Aug 1933, Tue
8:00 am AEST -10:00
Hamilton VIC, Australia
37°S45' 142°E02'
Geocentric
Tropical
Placidus
True Node
Rating: A



MONEY MAKERS

2nd House



Schapelle Corby



Scorpio on the 2nd House Cusp

Regenerator

-
- ▶ Develop intensity of purpose and depth of perception
Cultivate personal power and create regenerative change
 - ▶ Recycle experiences and become psychologically involved
Be investigative and delve beneath the surface
 - ▶ ♇ Pluto
Where (house) and how (sign) major life changes promote re-evaluation and regeneration

Schapelle Corby

Female Chart

10 Jul 1977, Sun
11:55 am AEST -10:00
Brisbane, Australia
27°S28' 153°E02'

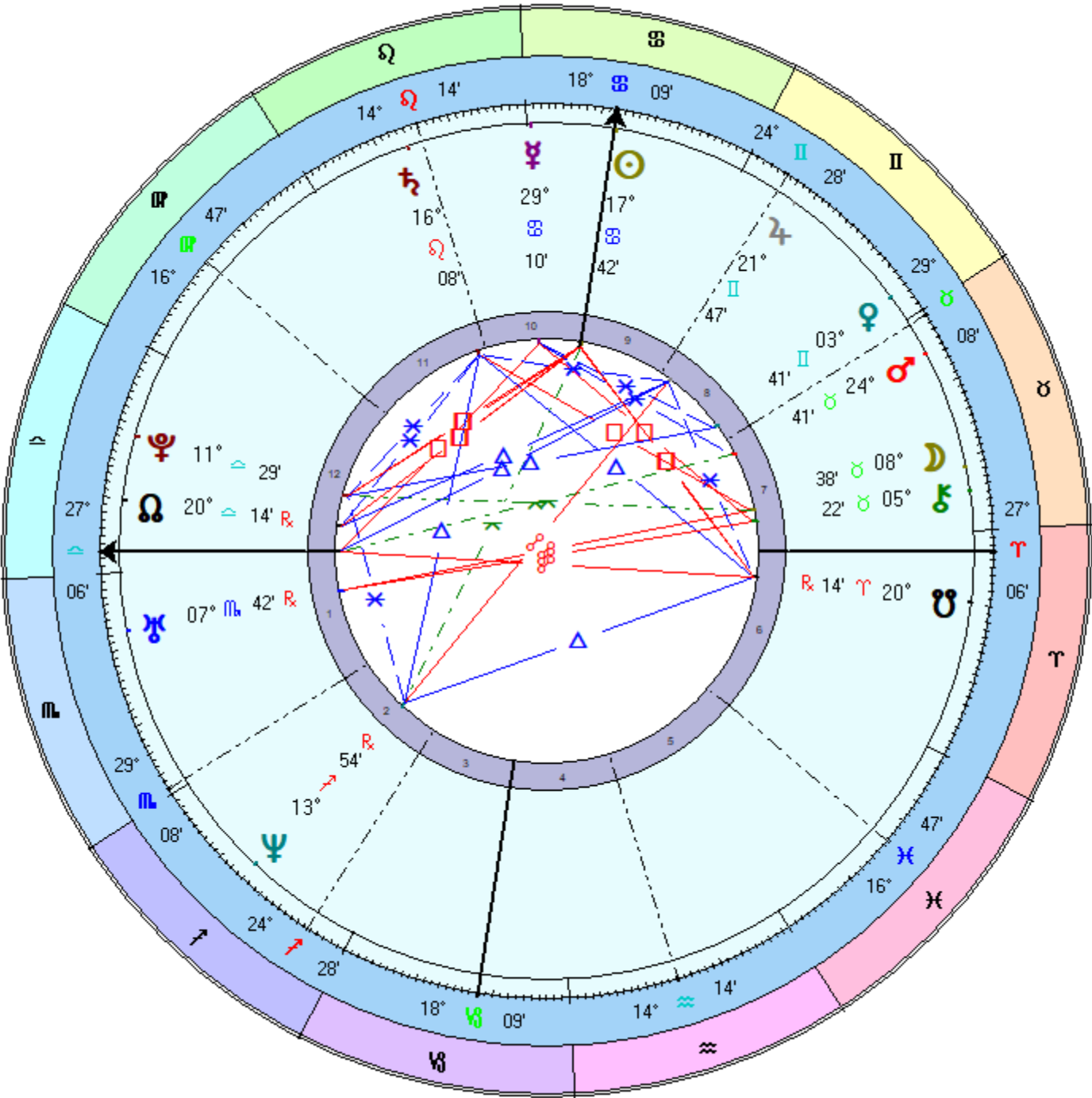
Geocentric

Tropical

Placidus

True Node

Rating: A



MONEY MAKERS

2nd House



Lleyton Hewitt

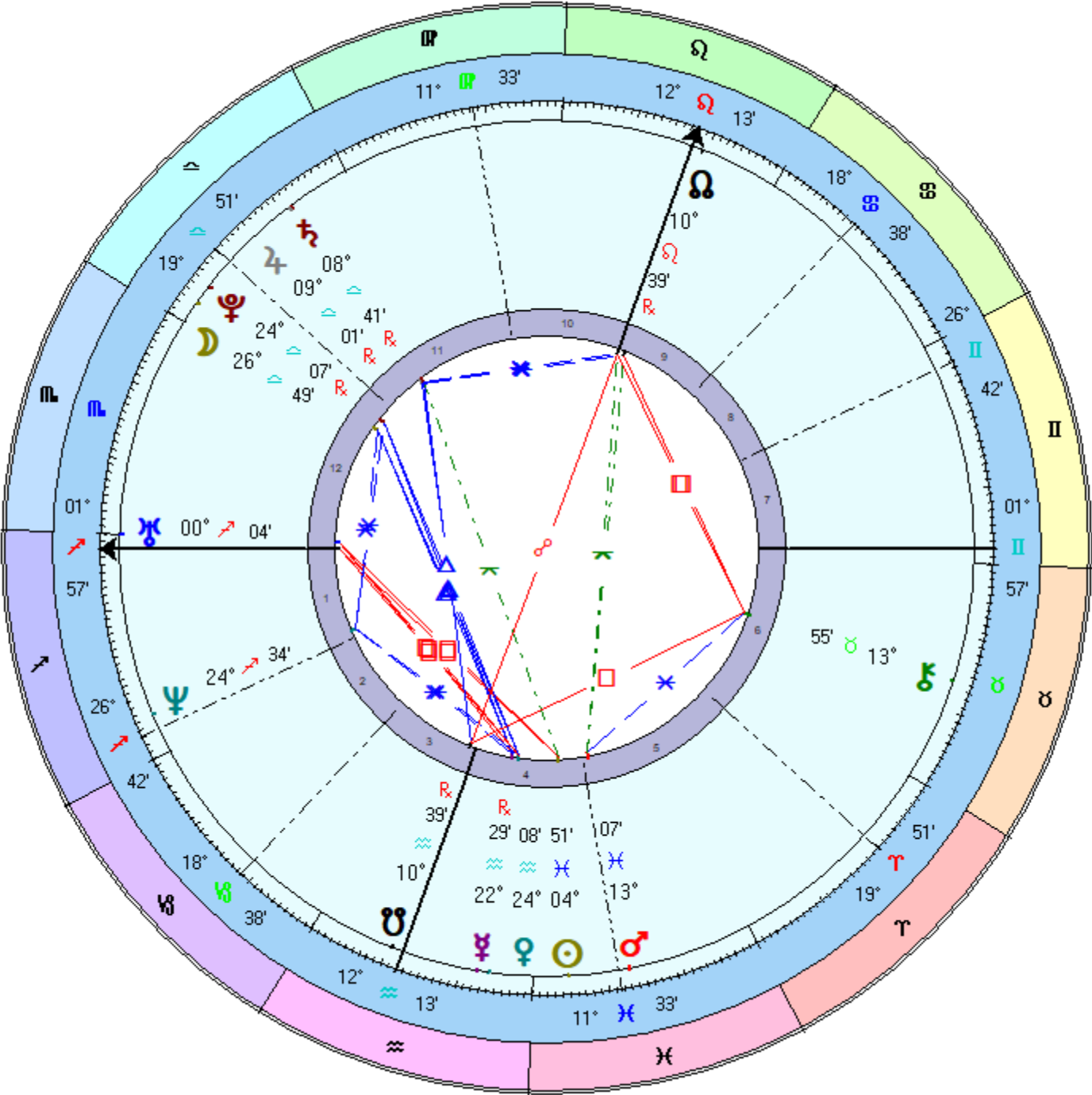


Sagittarius on the 2nd House Cusp

Visionary

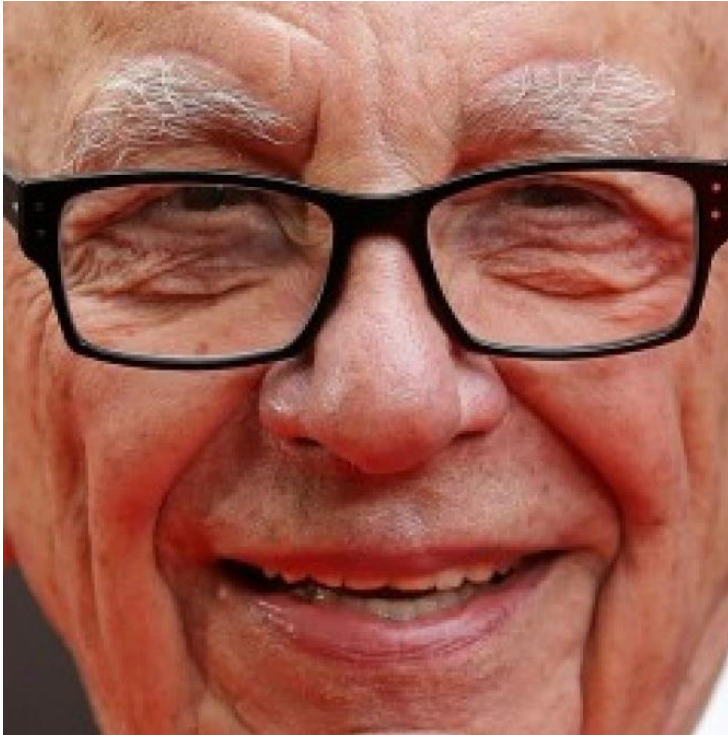
-
- ◀ Develop optimism, enthusiasm and vision
Be open-minded and adaptable
 - ◀ Bring understanding to abstract principles
Broaden your scope and be free to disseminate information
 - ◀ ♃ Jupiter
Where (house) and how (sign) to meet opportunities that encourage expansion and open your vision for the future

Lleyton Hewitt
Male Chart
24 Feb 1981, Tue
0:01 am ACDT -10:30
Adelaide, Australia
34°S55' 138°E35'
Geocentric
Tropical
Placidus
True Node
Rating: A



MONEY MAKERS

2nd House



Rupert Murdoch



Capricorn on the 2nd House Cusp

Administrator

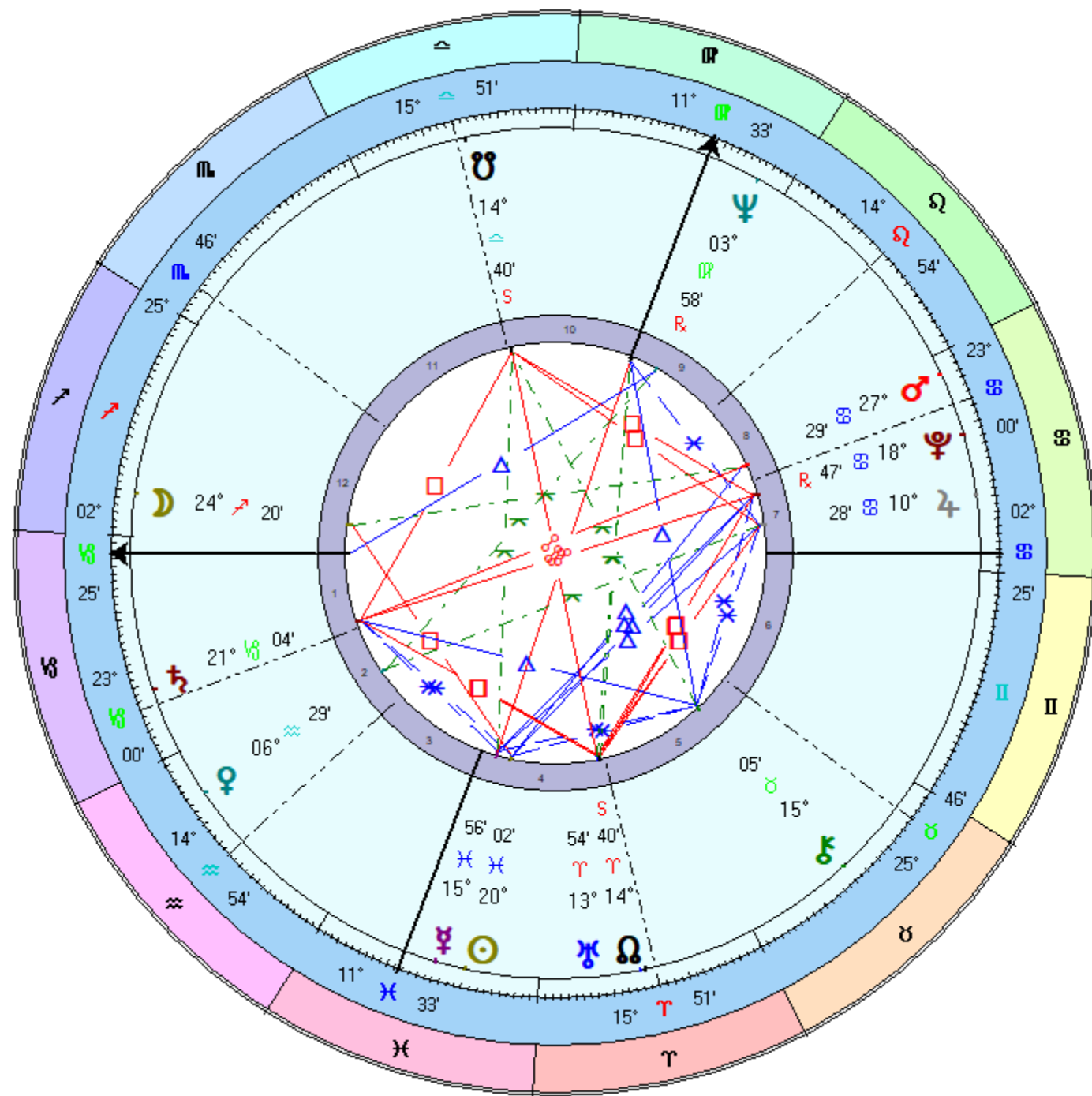
-
- ▶ Develop discipline, order and responsibility
Learn and comply to the rules
 - ▶ Operate within defined limits and regulations
Respect time and structure in building stability
 - ▶ ♄ Saturn
Where (house) and how (sign) responsibilities must be met to
manifest your vision and attain social security and respect

Male Chart

Geocentric

Placidus

Rating: A



MONEY MAKERS

2nd House



Dick Smith

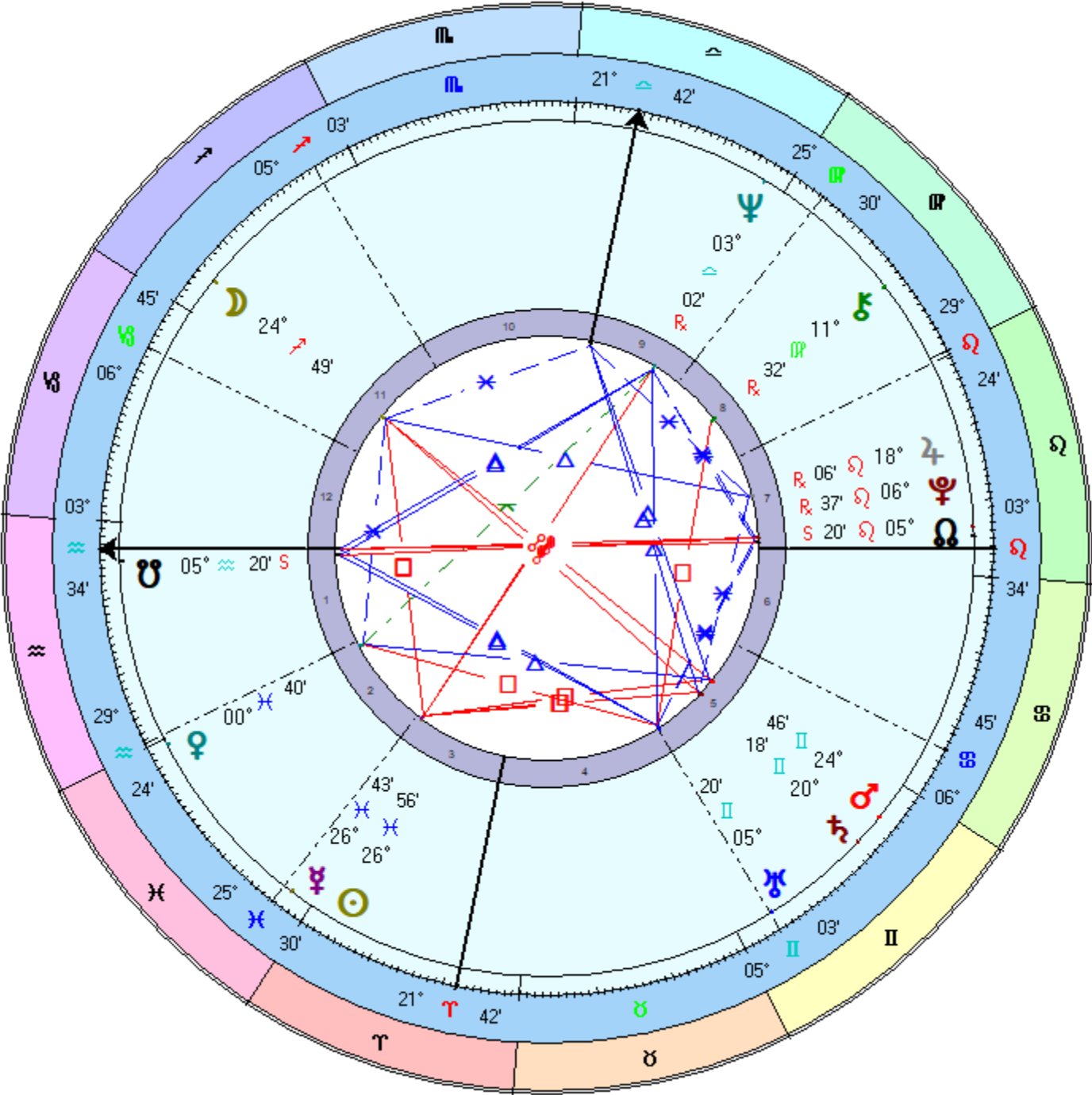


Aquarius on the 2nd House Cusp

Reformer

-
- ▶ Develop intuition, originality and progressiveness
Break free from tradition and experiment
 - ▶ Become aware of differences and forge new pathways
Take risks to change outdated modes
 - ▶ ♀ Uranus
Where (house) and how (sign) change creates opportunities for freedom from rigidity and implementation of ingenuity

Dick Smith
Male Chart
18 Mar 1944, Sat
3:00 am AEDT -11:00
Melbourne VIC, Australia
37°S49' 144°E58'
Geocentric
Tropical
Koch
True Node
Rating: A

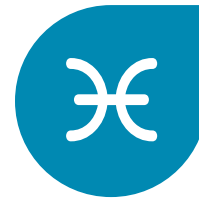


MONEY MAKERS

2nd House



Steve Irwin

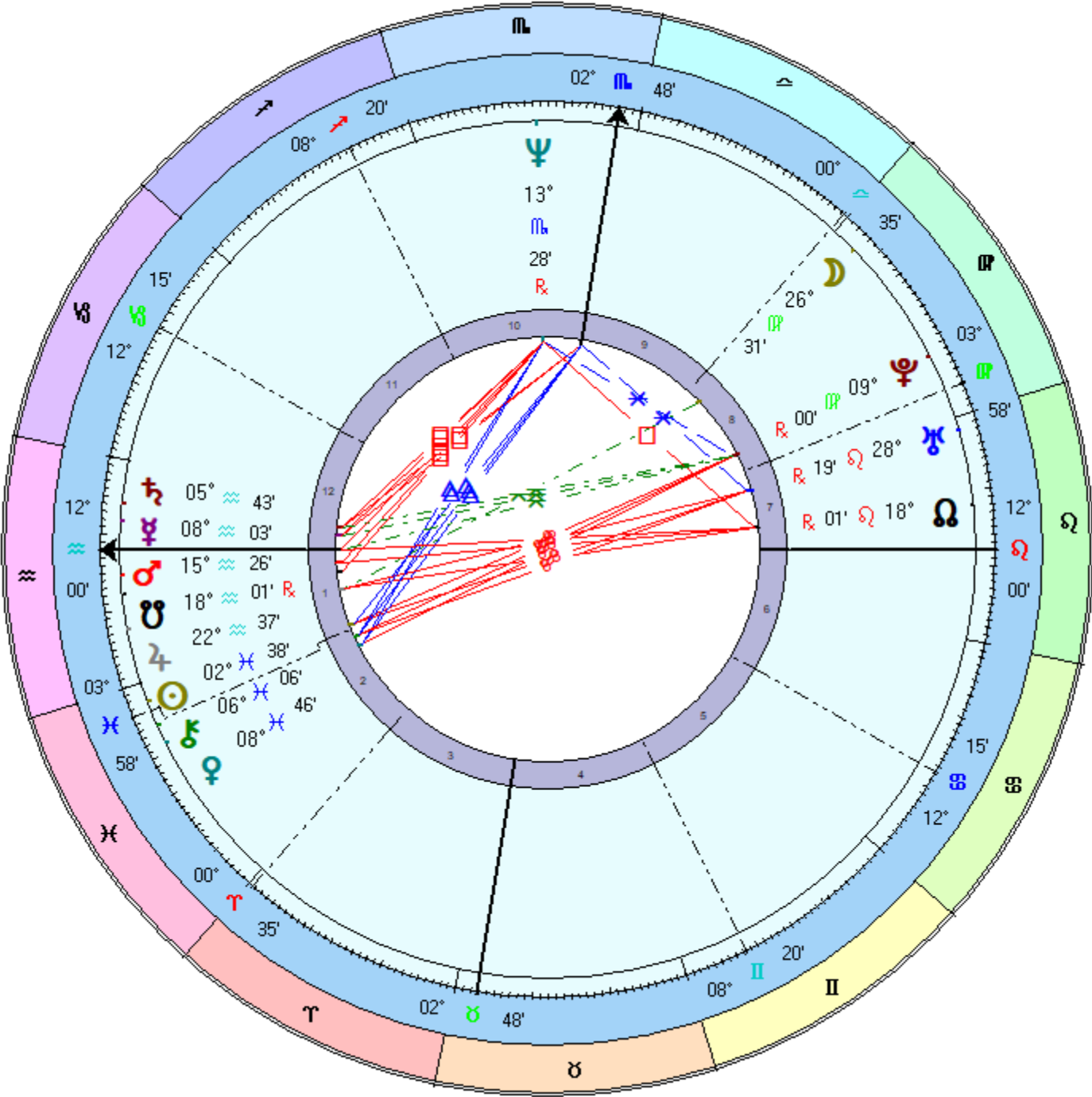


Pisces on the 2nd House Cusp

Faithful Creator

-
- ▶ Develop faith and commitment
Utilise your sixth sense and believe in yourself
 - ▶ Manifest your dreams into reality
Be creative, dedicated and committed to your ideals
 - ▶ ♆ Neptune
Where (house) and how (sign) to find inspiration and confidence
to walk into the unknown and be creative

Steve Irwin
Male Chart
22 Feb 1962, Thu
4:18 am AEST -10:00
Essendon, AUSTL
37°S46' 144°E55'
Geocentric
Tropical
Placidus
True Node
Rating: A



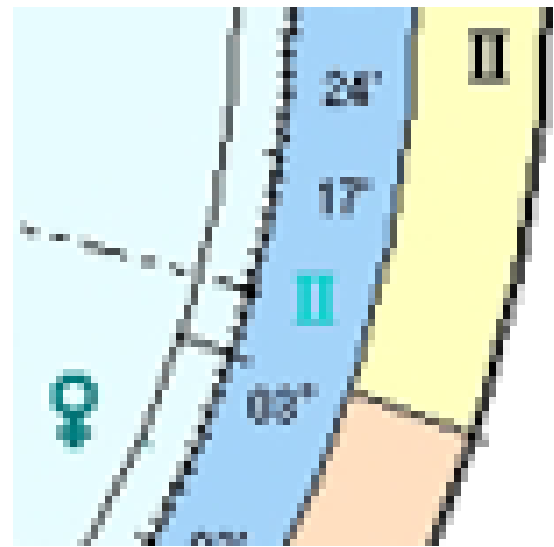
Productivity

6th House - Building Mastery of your Craft

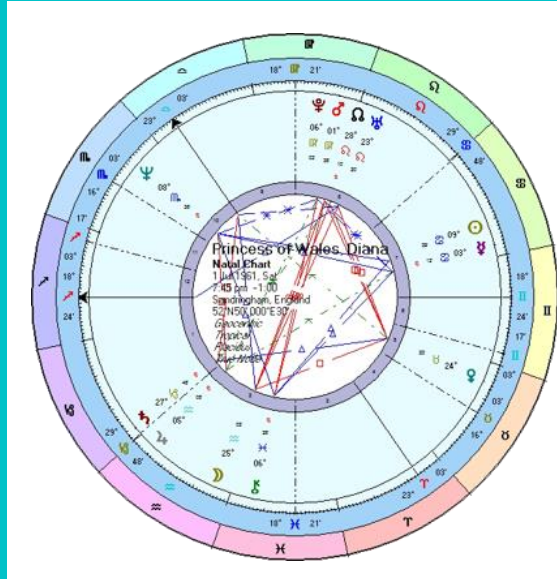


PRODUCTIVITY

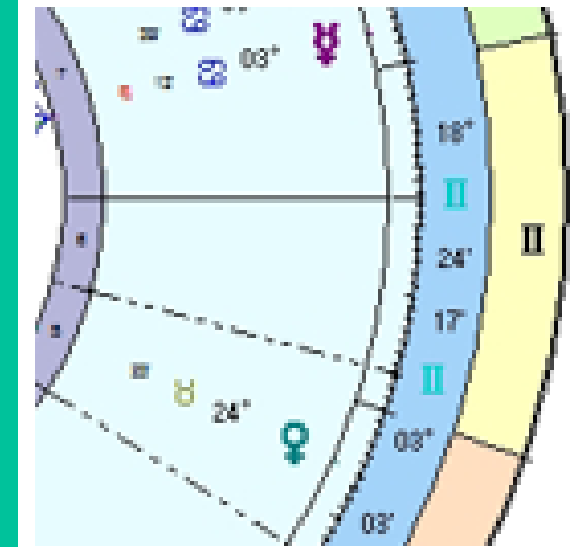
6th House



6th House Cusp Sign
Routine Environment
daily responsibilities



6th House Ruler Sign & House
Productive Energy
employment fulfilment



6th House Planets
Workplace Themes
skills to employ

PRODUCTIVITY

6th House



Fire Sign

Freedom of routine

Goal orientated
Growth and expansion
Enthusiasm
Vision for the future

Stimulating environment



Earth Sign

Security of routine

Attain tangible results
Productivity and stability
Predictability
Perseverance

Stable environment



Air Sign

Circulation of routine

Intellectual stimulation
Ideas exchange
Variety of productivity
Interaction

Intellectual environment



Water Sign

Nurturance of routine

Emotional connection
Sensitivity
Draw on the past
Instincts

Empathetic environment

PRODUCTIVITY

6th House

ARIES
Freedom in the workplace
Rely on instincts



GEMINI
Variety in the workplace
Flexible intellect



LEO
Expression in the workplace
Creativity and leadership



TAURUS
Stability in the workplace
Tangible productivity



CANCER
Nurturance in the workplace
Emotional involvement



VIRGO
Efficiency in the workplace
Analysis and organisation

AQUARIUS
Ingenuity in the workplace
Creative experimentation



SAGITTARIUS
Growth in the workplace
Optimistic goal-setting



LIBRA
Harmony in the workplace
Co-operative interchange



PISCES
Selflessness in the workplace
Inspiration and idealism



CAPRICORN
Responsibility in the workplace
Authority and organisation



SCORPIO
complexity in the workplace
Challenging problem-solving

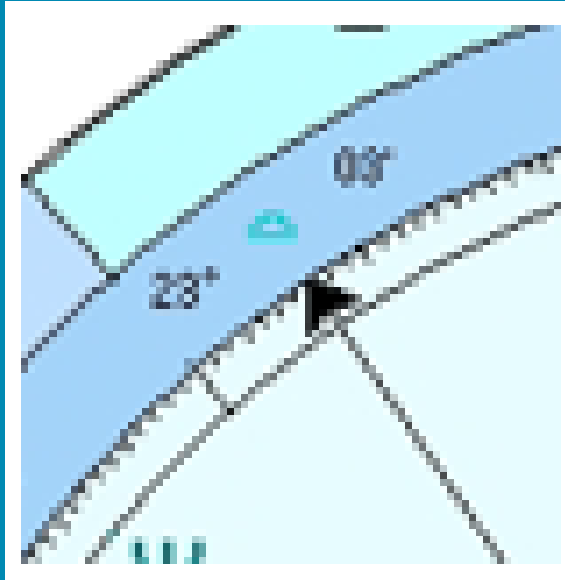


Vocational Calling

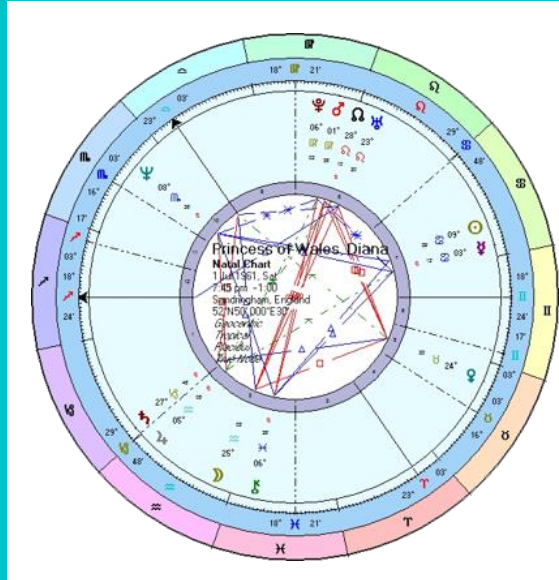
10th House – Professional Role and Accomplishments

VOCATIONAL CALLING

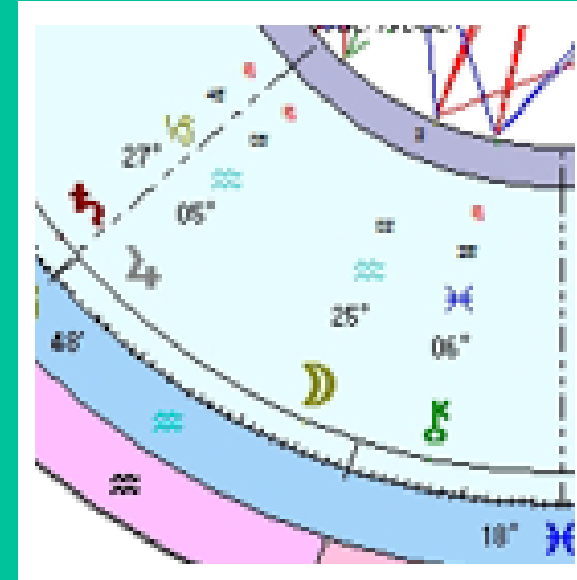
10th House



10th House Cusp Sign
Social Position
reputation



10th House Ruler Sign & House
Professional Goals
achievements



10th House Planets
Recognised Qualities
skills

VOCATIONAL CALLING

10th House



Fire Sign

Freedom

Leadership
Powers of projection
Establishing visions
Promotion opportunities

Share your goals



Earth Sign

Stability

Utilitarian skills
Practical orientation
Valued aims from effort
Power to succeed

Persistent endeavours



Air Sign

Interaction

Communicate
Mental stimulation
Network new ideas
Collaborate

Cultivate associations



Water Sign

Security

Emotional integrity
Demonstrate sensitivity
Nurture and sustain
Respect instincts

Maintaining attentiveness

10 th House Cusp	10 th Ruler in Hse	10 th Ruler Sign	10 th Hse Planets
♈ Independent initiation	1. First impressions	♈ Self-motivation	☉ Illuminate
♉ Valued production	2. Investments	♉ Practical results	♌ Emotional fluidity
♊ Distributor of ideas	3. Information	♊ Intellectual curiosity	♍ Mental agility
♋ Nurturing instincts	4. Security	♋ Emotional stability	♀ Artistic attraction
♌ Powerful expression	5. Creativity	♌ Confident purpose	♂ Competitive action
♍ Strategic efficiency	6. Routines	♍ Systemisation	♎ Open-minded freedom
♎ Supporting others	7. Relationships	♎ Artistic diplomacy	♏ Successful goals
♏ In-depth analysis	8. Resources	♏ Passionate action	♐ Healer
♐ Principled expansion	9. Integrity	♐ Optimistic vision	♑ Change awakener
♑ Authoritative ambition	10. Achievements	♑ Respectful regard	♒ Beauty aspirations
♒ Innovative reform	11. Progress	♒ Unique future	♓ Evolutionary makeover
♓ Faithful service	12. Collective	♓ Dream commitment	

Soul Purpose

North Node



SOUL PURPOSE

North Node



- Survival instincts
- Independent building
- Listening skills
- Emotional sensitivity
- Capable leadership
- Willingness to experience



- Fulfilling other' needs
- Combining resources
- Intuitive spontaneity
- Skilled management
- Team player,
- Intuitive flow

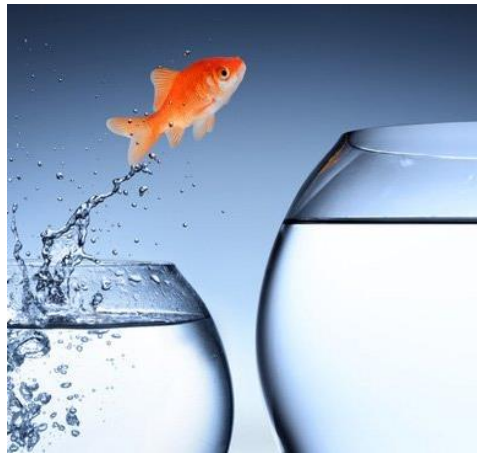


Changes in Direction

MC Transits – Career in Motion

CHANGES IN DIRECTION

MC Transits

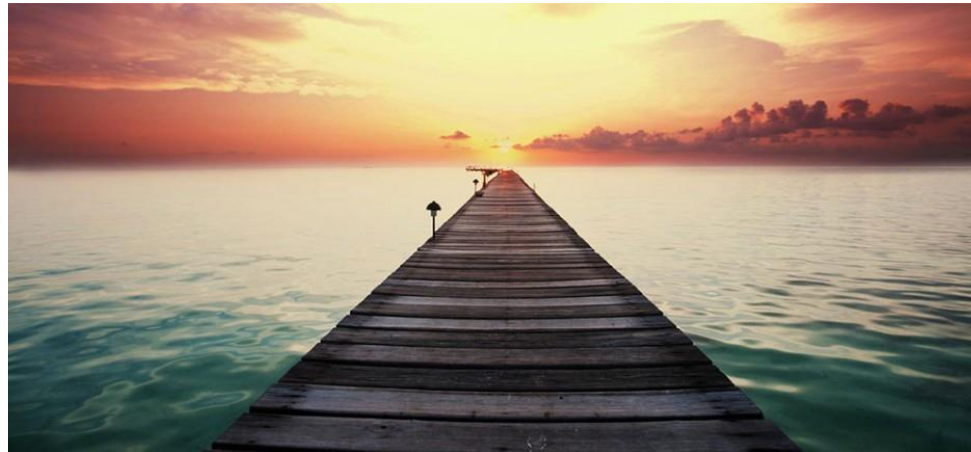


“ Broaden your horizons ”

Enlarge your experiences
The desire for more
Optimism breeds opportunity



4



Growth
Promotion
Prestige
Recognition
Success



CHANGES IN DIRECTION

MC Transits



“ Attending to Responsibilities ”

Seeking recognition for accomplishments
Dealing with reality
Meeting practical demands



Reputation
Re-evaluation
Restructure
Foundations
Career apex



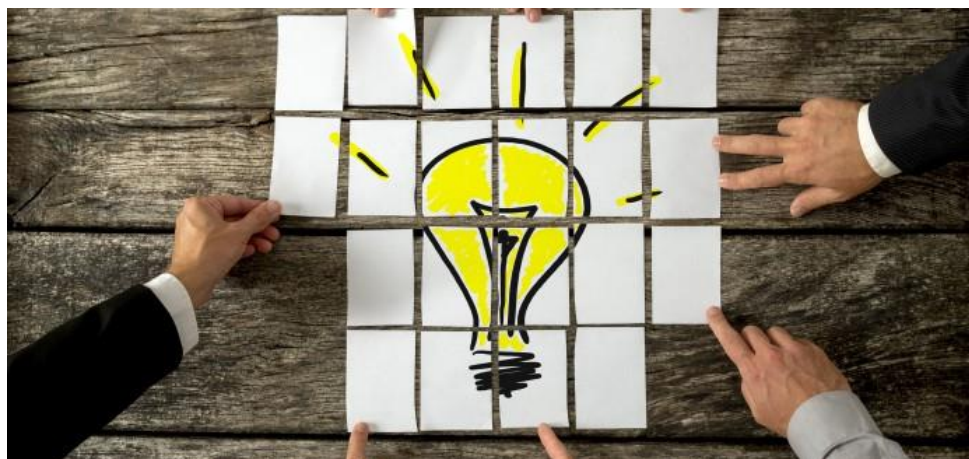
CHANGES IN DIRECTION

MC Transits



“ Breaking out of
outmoded patterns ”

Explore the unknown
Original inventiveness
Unexpected opportunity or crisis



Break free
Change
Experiment
Progress
Innovate

CHANGES IN DIRECTION

MC Transits



“Dissolving physical
over- attachments”

Detachment and disintegration
Challenge of faith
Spiritual growth



Confusion
Belonging
Faith
Idealism
Awakening



CHANGES IN DIRECTION

MC Transits



“Redemption and
rebirth”

Change in perspective
Eliminating the old to bring in the new
Self evolvment



Power
Transformation
Evolution
Regeneration
Renewal



THE END

Getting the Best out of your Relationships

9



facebook.com/NarellesAstrology



astrologyreading.com.au



narelle@narellesastro.com